

**14/10**

**NZZC**

***Tauranga Aerodrome – Airshow and Restricted Area NZR286  
Effective: 5 to 7 FEB 10***

SPORTAVEX 2010 will be held at Tauranga during the period 5 to 7 FEB 10. This event is being hosted by the Sport Aircraft Association (NZ), Inc. Extensive light aircraft, helicopter and microlight activity, including NORDO traffic will take place within the circuit and surrounding area.

An airshow will be held on SUN 7 FEB 10, 1000 to 1630 NZDT.

**Airspace**

Tauranga CTR/D and Rotorua CTA/D will be operative as per notified hours of service. Check AIP SUP 2/10 and NOTAM.

**Frequencies**

Aerodrome Control:	Tauranga TOWER	118.3 MHz
Ground Movements:	Tauranga GROUND	123.4 MHz
ATIS:	126.6 MHz	

Temporary restricted area NZR286 is prescribed to facilitate the airshow co-ordination during the Tauranga City Airshow as follows:

## **NZR286 Tauranga, Bay of Plenty**

All that airspace laterally designated as NZA256 (Tauranga CTR/D).

Upper limit: 9500ft AMSL.

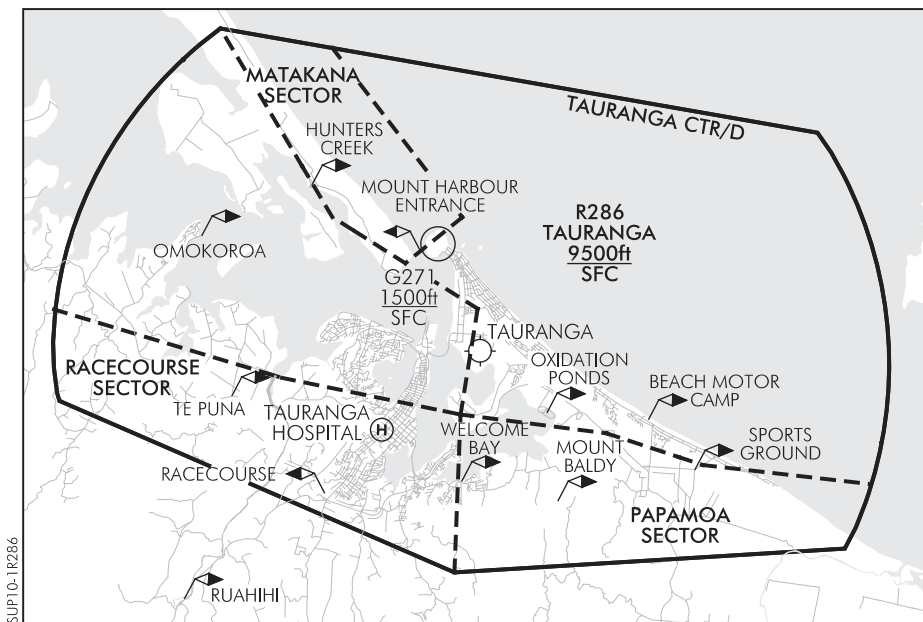
Lower limit: Surface.

Activity: Active between 1002062100 and 1002070330 (1000 to 1630, SUN 7 FEB 10 NZDT) or as advised by NOTAM; air display.

Administering Authority: Airways Corporation of NZ Ltd; Tauranga Control Tower, 118.3 MHz, Tel (07) 575 4144.

Airshow Co-ordinator: K. Skilling, Tel (07) 571 6100.

Co-Directors: W. Sisley, Tel (07) 549 1855 or 027 303 3131,  
A. Gormlie, Tel (07) 572 4000 or 021 822 205.



### **Administering authority and facilities**

The administering authority may suspend operations or entry approval to the restricted area at any time during NZR286 activation, if deemed necessary in the interests of safety and especially at times of emergency. IFR training is not available at any time during activation of NZR286. IFR training within the Tauranga CTR/D may be restricted at other times at the discretion of Tauranga Tower.

NOTAM and pre-flight weather information will be available from the Tauranga Aero Club and Bay Flight International. The ATIS will broadcast any special conditions on frequency 126.6 MHz.

## **Control zone entry approval**

Entry approval for the Tauranga CTR/D is subject to any aircraft complying with the clearance provided by Tauranga Tower.

## **Radio procedures**

Pilots should observe standard radio procedures within Tauranga CTR/D. After landing and clearing the manoeuvring area pilots should contact GROUND on 123.4 MHz for parking instructions.

## **NORDO operations**

Pilots of arriving or departing NORDO aircraft must contact Tauranga Tower on Tel (07) 575 4144 for a briefing and ATC instructions.

## **Operational procedures**

Pilots should listen to the ATIS prior to entering the Tauranga CTR/D, and prior to taxiing for departure, to receive aerodrome information.

The circuit height for powered aircraft will be 1000ft AGL unless otherwise instructed. Aircraft so equipped must operate with landing lights and/or anti-collision lights switched on.

## **Grass RWY 07/25**

Grass RWY 07/25 will be operative with reduced length between 0600 NZDT, SAT 6 FEB 10 and 2100 NZDT, SUN 7 FEB 10. Distance available will be 575m, thresholds are marked by white tyres. Refer attached chart.

## **Grass RWY 16/34**

Grass RWY 16/34 will be closed for take-offs and landings between 1700 NZDT, THU 4 FEB 10 and 0600 NZDT, MON 8 FEB 10.

## **Joining procedures**

Due to the anticipated high density of aircraft within and overhead the circuit area, overhead circuit joining will not be permitted. All arriving aircraft can expect to route:

- from the northwest via a Matakana One Arrival
- from the south via a Racecourse One Arrival
- from the east via a Papamoa One Arrival

Refer to the AIP Vol 4 Tauranga VFR Arrival procedures.

## **After landing procedures**

After landing, aircraft will receive instructions from Tauranga Tower to clear the runway and change to GROUND frequency 123.4 MHz for parking. Aircraft participating in SPORTAVEX will be directed to parking east of the Tauranga Aero Club. Other aircraft will be directed to visitor parking on the southern portion of RWY 16/34.

A new holding position G7 and associated grass taxiway is established to the south of RWY 07/25. Refer to the attached chart.

## Departure procedures

Pilots must advise aircraft registration, ATIS and required departure procedure on the ground frequency 123.4 MHz. Pilots shall be advised when to change to 118.3 MHz and taxi to the holding position for the runway-in-use. When first in line at the holding point report ready for departure on 118.3 MHz.

All departing aircraft can expect to route:

- to the northwest via a Matakana One Departure
- to the south via a Racecourse One Departure
- to the east via a Papamoa One Departure

Refer to the AIP Vol 4 Tauranga VFR Departure procedures.

SARTIME notifications will **not** be accepted on TOWER or GROUND. Aircraft should call Christchurch Information 125.5 MHz clear of the Tauranga CTR/D with any SARTIME notifications.

## Fuel

The Shell Avgas 100 facility located west of the Tower will not be available between 1700 NZDT, THU 4 FEB 10 and 0600 NZDT, MON 8 FEB 10. Access to BP Avgas 100 pumps will be limited due congestion.

Petroleum Logistics will provide tanker fuel delivered to the aircraft park FRI, SAT and SUN. Refuelling in the aircraft park will not be available during the hours of the airshow.

Petroleum Logistics will accept all credit cards, cheque or cash for payment. Tel for fuel: (021) 276 7767, (027) 576 7756 or (027) 576 7767.

## Tauranga City Airshow

During the airshow (1000 until 1630 NZDT, SUN 7 FEB 10, or as advised by NOTAM), NZR286 will be active and this area will be closed to all aircraft except for airshow participants and emergency flights.

Prior approval must be obtained for scheduled passenger transport aircraft to enter NZR286 and land at Tauranga aerodrome, or for departure from Tauranga aerodrome.

All airshow display pilots must attend the briefing which will be held in the Boeing Room, Classic Flyers NZ at Tauranga aerodrome at 0830 NZDT, SUN 7 FEB 10. The Airshow Co-ordinator will personally brief any airshow pilot who will not be operating from Tauranga.

Prescribed pursuant to the Civil Aviation Rules, Part 71 *Designation and Classification of Airspace*, under a delegated authority issued by the Director of Civil Aviation.

ELEV 13

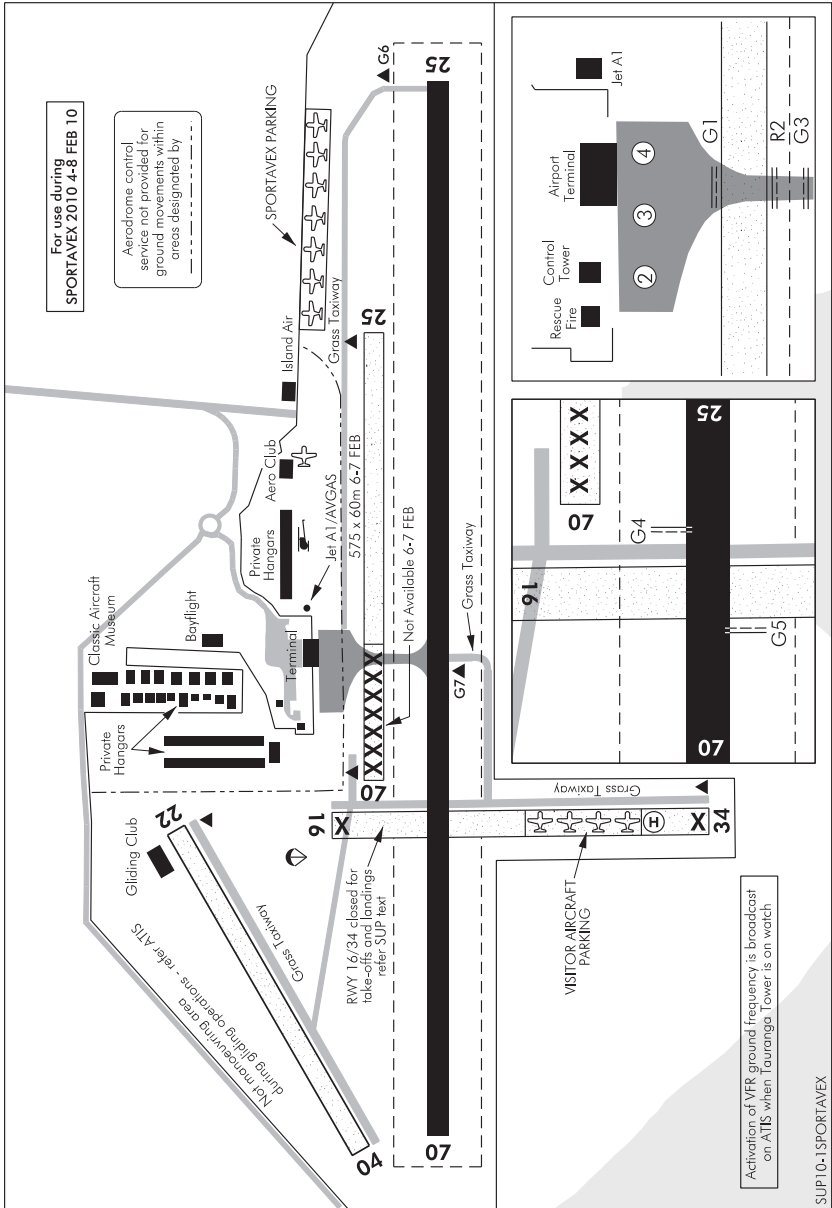
NZTG

# TAURANGA GROUND MOVEMENTS

TOWER : 118.3 123.4

GROUND : 123.4

ATIS : 126.6



**Effective: 4-8 FEB 10**